

Chapter 6

Octave Designations in Music¹

There are many ways in which to designate pitches by text. In this module we introduce a system of identification developed by the Acoustical Society of America. The lowest C on the piano keyboard is C1. The next C above that is designated C2, the C above that is C3, and so forth. The pitches above each C receive the octave designation of the C they are above as given below on the piano keyboard:



Figure 6.1: The graphics of the keyboard in Figure 1 are modified from Tobias R. – Metoc, <http://en.wikipedia.org/wiki/File:Klaviatur-3-en.svg> (Accessed 01 May 09). It is licensed for public use under the Creative Commons Attribution License.

Here are octave designations with notation:

¹This content is available online at <<http://cnx.org/content/m22936/1.2/>>.

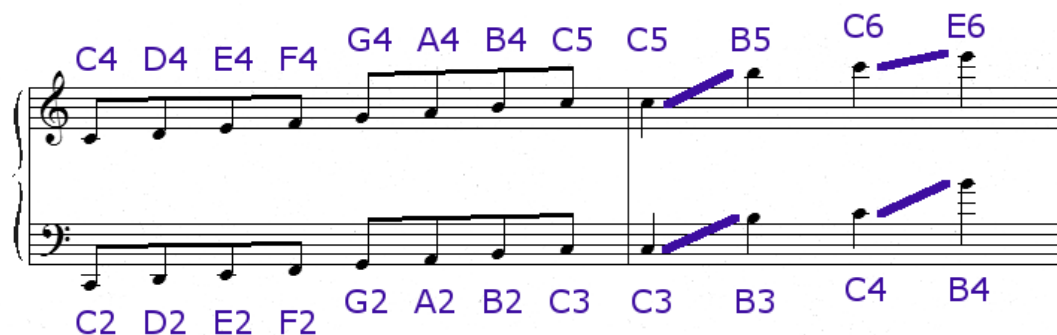


Figure 6.2

For a video on octave designations see:

Octave Designations (2 minutes) [RealPlayer²](#) | [Windows Media³](#) | [iPod or QuickTime Player⁴](#)
[youtube⁵](#)

²<http://terryewell.com/tu/theory/OctaveDesignation.ram>

³<http://terryewell.com/tu/theory/OctaveDesignation.wmv>

⁴<http://terryewell.com/tu/theory/OctaveDesignation.mp4>

⁵<http://www.youtube.com/watch?v=7Yp-k7vMzwI>